

words & music by
JAMES TAYLOR

CAROLINA IN MY MIND

arr. by M. Drannon WILES &
©2014 ZACH NELSON for the
UNC CLEF HANGERS

Solo:

Solo: In my mind I'm

TEHAI Do-do — Do — Do — Do — Do —

TEHAI Do — Do Do Do Do — do —

BARITONE Do — Do — Do — Do — Do —

BASS Doom Doom Doom Doom dum dum dum

Rob

HI-HAT (closed H-H)

SNARE (rim) Ts Chk Ts

BASS DRUM Dum Doom

gone to Car-o-li - na

Can't you see the sun - shine

do — do — Do - do - do do - do - Do Ba - da

do — (do) do — do — (do) Do — (do -) Ba Ba —

Dum dum (open) Dum dum - dum dum - dum dum - dum dum

Ts Tssss Ts TS...

chk...

Doom Doom

CAROLINA IN MY MIND [p. 2]

13

Handwritten musical notation for measure 13, featuring a treble clef, a key signature of one flat, and a 4/4 time signature. The melody consists of eighth and sixteenth notes.

Can't you just feel the moon shin - ing Aint it just like a friend of mine to hit me from be - hind

Handwritten musical notation for measure 14, continuing the melody from the previous measure.

do do-do do Ba — Do do do do — Do - Do Do

Handwritten musical notation for measure 15, featuring a treble clef and a 4/4 time signature.

do do-do Ba - da Do do do do — do - do - do

Handwritten musical notation for measure 16, featuring a bass clef and a 4/4 time signature.

dum dum - dum dum dum dum dum dum dum

Handwritten musical notation for measure 17, featuring a treble clef and a 4/4 time signature.

Handwritten musical notation for measure 18, featuring a treble clef and a 4/4 time signature.

16

Handwritten musical notation for measure 19, featuring a treble clef and a 4/4 time signature.

Yes I'm gone to Car - o - li - na in - my mind -

Handwritten musical notation for measure 20, featuring a treble clef and a 4/4 time signature.

Do I'm gone Car' - li - na - mind - do do do do do - do -

Handwritten musical notation for measure 21, featuring a treble clef and a 4/4 time signature.

Do I'm gone Car' - li - na - mind - Do - do

Handwritten musical notation for measure 22, featuring a bass clef and a 4/4 time signature.

dum I'm gone Car' - li - na - mind dum dum dum

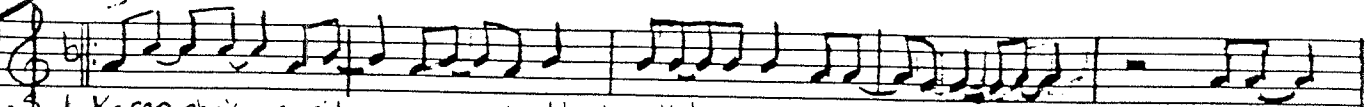
Handwritten musical notation for measure 23, featuring a treble clef and a 4/4 time signature.

Handwritten musical notation for measure 24, featuring a treble clef and a 4/4 time signature.

Handwritten musical notation for measure 25, featuring a treble clef and a 4/4 time signature.

21

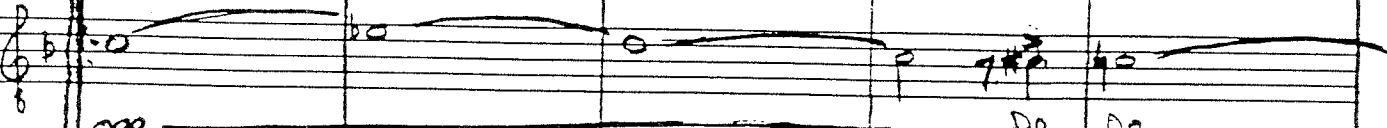
J.W.
ERIC



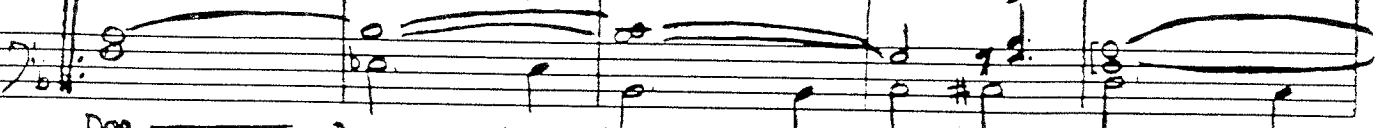
1. Karen she's a sil-ver sun you'd best walk her away and watch it shin-ing Watch her
2. aint no doubt....
3. Dark and silent....



Ding Ding Ding Ding Ding Ding Ding Do do-do(do)



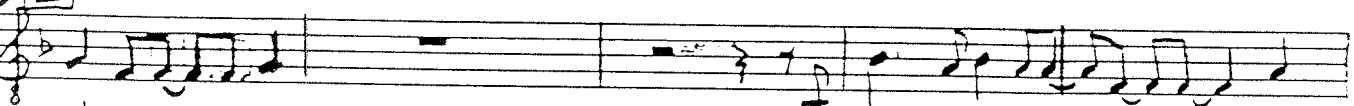
Do Do



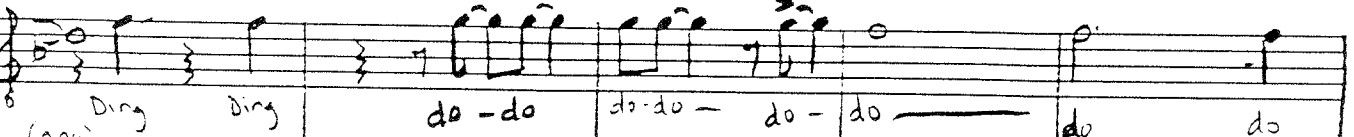
Doo dum dum dum dum dum



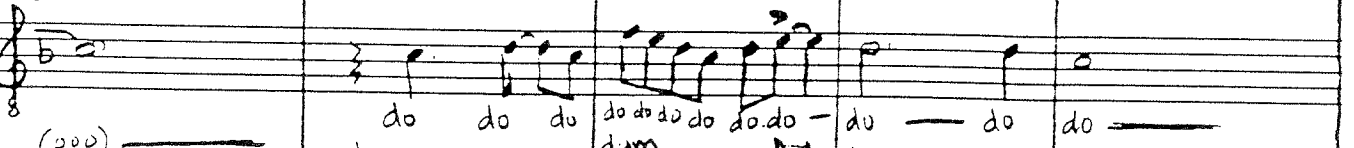
26



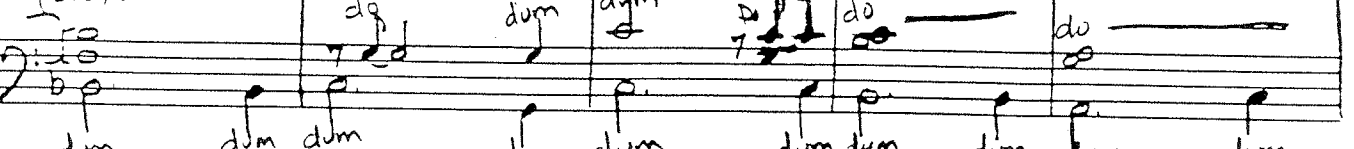
watch the mor-ning come A sil-ver tear appearing now I'm



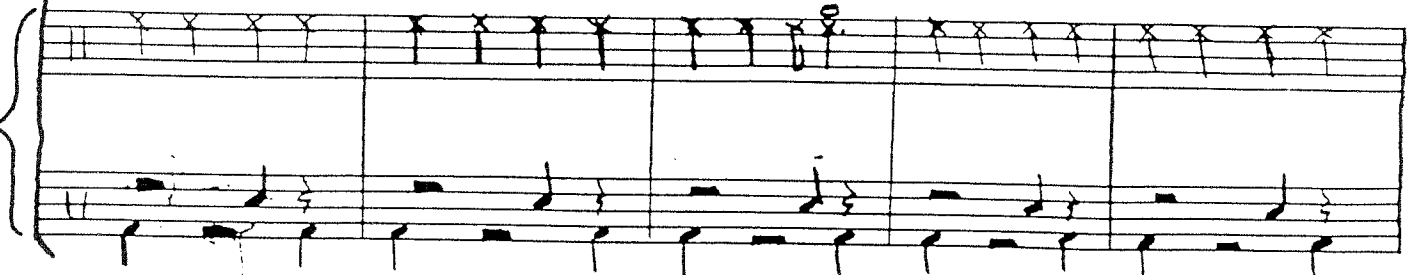
(ooo) Ding Ding do-do do-do do-do do do



(ooo) do do do do do do do do do do do do do do



dum dum dum dum dum dum dum dum



CAROLINA p. 4

31

3rd time to C

cry - ing Aint I Im gone to Car-o-li - na in my mind

CRY - in' Aint I gone Car' - li - na - mind do do-do- do
dya goin' go - in' 3rd time to C 3rd time to F

cry - in' Aint I gone Car' - li - na - mind do - do

cry - in' - Aint I gone CAR' - li - na - mind dum

3rd time to C

32

(1vo)

(trere) In my mind Im gone to Car - o li - na

do-do

In my mind Im gone to Car - o - li - na

do do do do-do -

do-do In my mind Im gone to Car - o li - na do do do do-do -

dum dum dum dum dum dum dum dum dum dum

CAROLINA p. 5

41

Can't you see the sun-shine
 Can't you just feel the moon shin - ing
 And it just like a friend

Can't you see the sun-shine
 Can't you just feel the moon shin - ing

Do Do Do Do Do - Do - Do -

dum dum dum dum dum dum dum dum dum dum

46

- of nine to hit me from behind - yes I'm gone to Car-o-li - na in - my mind

D.S. ⁸ al Coda

Do - Do Do Do I'm gone Car li - na mind

dum dum dum dum dum I'm gone Car - li - na

D.S. ⁸ al Coda

⊕ CODA
51

CAROLINA p.6

with a ho - ly host of o - thers standin around me

Do Do Ah Ah Bm Bm

(ooo -) Ah Bm Bm

Dum Dum dum Dum dum dum dum dum dum dum

Ts Ts Ts Tssss

Still Im on the dark side of the moon — And it seems like it goes

ooo Bm do Bm do Bm do

dum dum dum dum dum BADA dum dum dum - ooo

36

- shine
- shine
Can't you just feel the moon shin - ing
Ain't it just like a friend of mine to

Ba da do do do do
Ba do - do - do - do -
Ba do do do -
Ba do do - do - do -
dum dum dum dum dum dum dum dum

Rhythmic notation for piano accompaniment.

Four sets of empty musical staves.

CAROLINA p. 10

81

hit me from behind - yes I'm gone to car-o-li-na in
gone to car-o-li-na in
do-do-do do I'm gone car-li-na in
do-do-do do I'm gone car-li-na in
dum dum dum I'm gone car-li-na dum dum

CAROLINA [p. 11]

96

Repeat 3 fade out

my mind

gone to Car-o-li-na in-my mind

my mind -

my mind ooo do - do - do - do - do - do - do - do

my mind ooo do - do - do - do - do - do - do - do

dum dum dum dum dum dum dum - dum - dum - dum - dum

Repeat 3 fade out

Repeat 3 fade out

v. 2 There aint no doubt in no ones mind that loves the finest thing around
 whisper something soft and kind
 And hey babe, the sky's on fire. I'm dying, aint I?
 I'm gone to Carolina....

v. 3 Dark and silent late last night I think I might have
 heard the highway calling;
 Geese in flight and dogs that bite.
 And signs that might beomens say I'm goin' - I'm goin'
 I'm gone to Carolina....

1990-91 CURE ROCK THE HOUSE!!!

Reed & Zach